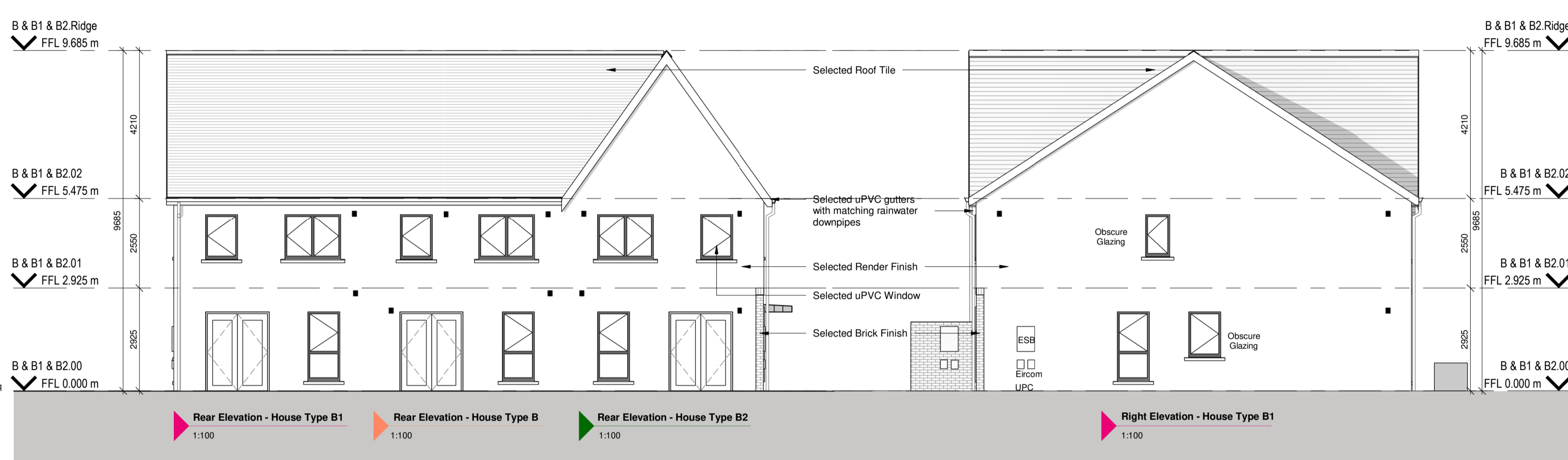
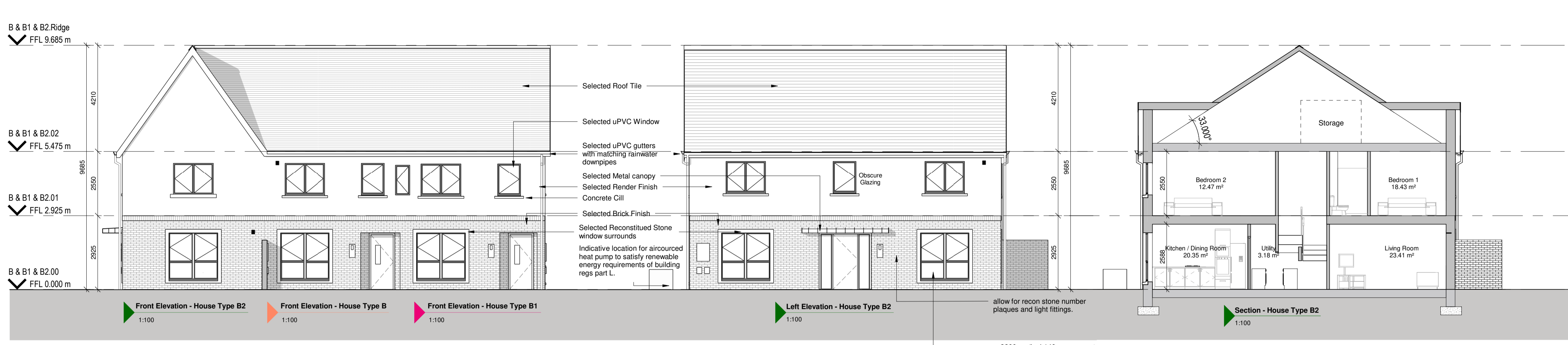


**NOTES / LEGEND**

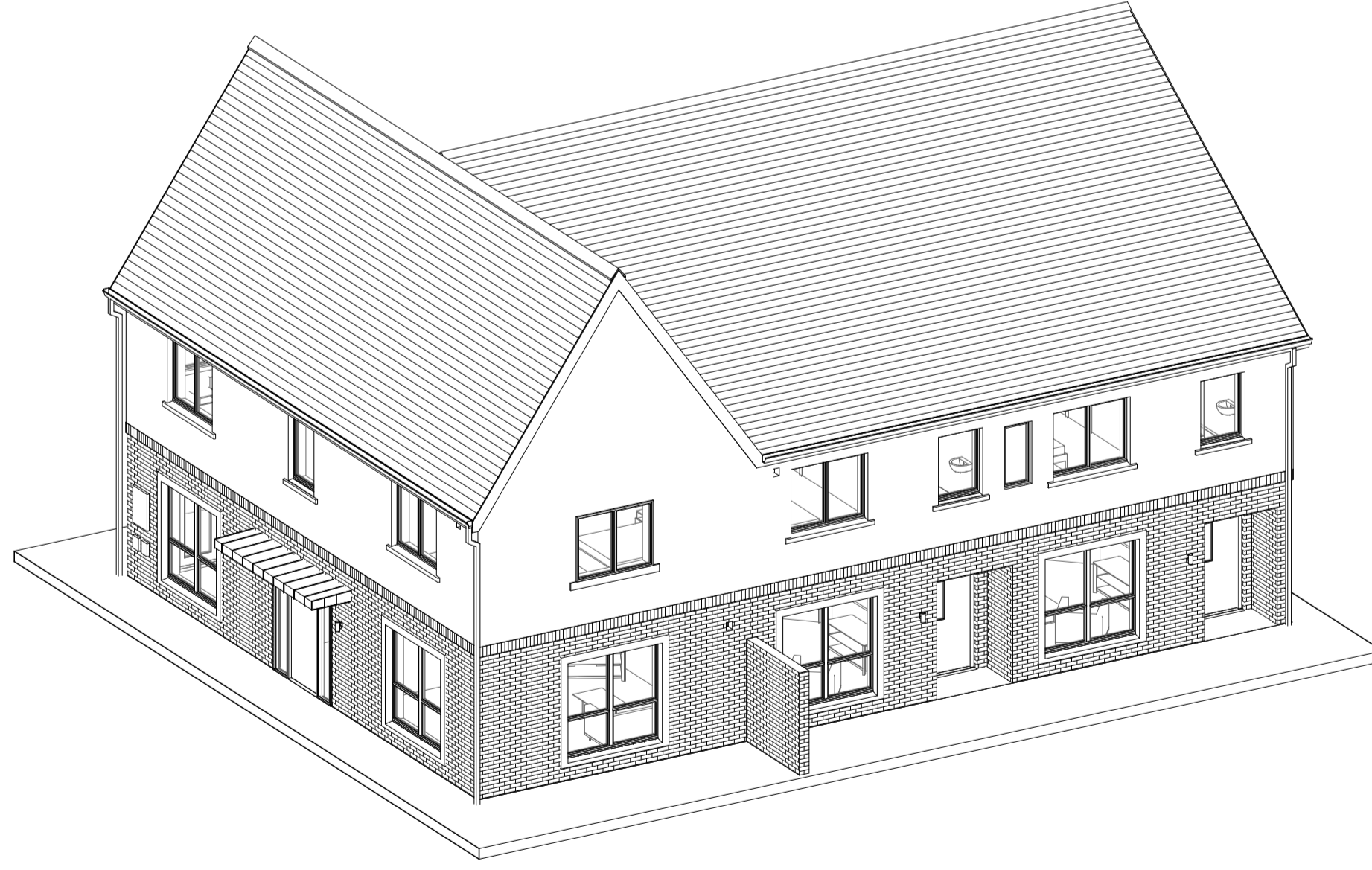
- FOR NORTH POINT AND LEVELS PLEASE REFER TO SITE LAYOUT PLAN
- A HANDED VERSION MAY APPLY DEPENDING ON LOCATION WITHIN THE SCHEME



B Room Schedule	
Name	Area
Kitchen / Dining Room	21.15 m <sup>2</sup>
WC	2.37 m <sup>2</sup>
Living Room	17.03 m <sup>2</sup>
Hallway	7.97 m <sup>2</sup>
Utility	3.75 m <sup>2</sup>
Store	0.54 m <sup>2</sup>
Bedroom 1	15.45 m <sup>2</sup>
Bedroom 3	8.23 m <sup>2</sup>
Bedroom 2	12.33 m <sup>2</sup>
Landing	8.00 m <sup>2</sup>
HP	0.66 m <sup>2</sup>
Bathroom	4.76 m <sup>2</sup>
Store	2.62 m <sup>2</sup>
En-Suite	4.16 m <sup>2</sup>
Aggregate Living Area	38.18m <sup>2</sup>
Ground Floor GIFA	57.80m <sup>2</sup>
Aggregate Bed Area	36.01m <sup>2</sup>
First Floor GIFA	59.45m <sup>2</sup>
Attic Storage	2.8m <sup>2</sup>
Total Storage	8.22m <sup>2</sup>
<b>Total Floor Area =</b>	<b>117.26m<sup>2</sup></b>

B1 Room Schedule	
Name	Area
Kitchen / Dining Room	20.98 m <sup>2</sup>
Hallway	7.85 m <sup>2</sup>
WC	2.29 m <sup>2</sup>
Living Room	17.00 m <sup>2</sup>
Utility	3.74 m <sup>2</sup>
Bedroom 1	15.27 m <sup>2</sup>
Bedroom 2	12.26 m <sup>2</sup>
Landing	4.09 m <sup>2</sup>
HP	0.69 m <sup>2</sup>
Bathroom	4.72 m <sup>2</sup>
Bedroom 3	8.11 m <sup>2</sup>
En-Suite	4.16 m <sup>2</sup>
Store	2.62 m <sup>2</sup>
Aggregate Living Area	37.98m <sup>2</sup>
Ground Floor GIFA	57.392m <sup>2</sup>
Aggregate Bed Area	35.64m <sup>2</sup>
First Floor GIFA	59.010m <sup>2</sup>
Attic Storage	2.8m <sup>2</sup>
Total Storage	8.22m <sup>2</sup>
<b>Total Floor Area =</b>	<b>116.402m<sup>2</sup></b>

B2 Room Schedule	
Name	Area
Hallway	5.39 m <sup>2</sup>
Kitchen / Dining Room	20.32 m <sup>2</sup>
Utility	3.29 m <sup>2</sup>
Living Room	23.41 m <sup>2</sup>
WC	2.17 m <sup>2</sup>
En Suite	3.05 m <sup>2</sup>
Bedroom 1	18.38 m <sup>2</sup>
Bedroom 3	7.88 m <sup>2</sup>
Bedroom 2	12.75 m <sup>2</sup>
Landing	4.20 m <sup>2</sup>
HP	0.70 m <sup>2</sup>
Bathroom	4.80 m <sup>2</sup>
Aggregate Living Area	43.73m <sup>2</sup>
Ground Floor GIFA	59.010m <sup>2</sup>
Aggregate Bed Area	39.18m <sup>2</sup>
First Floor GIFA	59.010m <sup>2</sup>
Attic Storage	2.8m <sup>2</sup>
Total Storage	7.19m <sup>2</sup>
<b>Total Floor Area =</b>	<b>118.02m<sup>2</sup></b>



KEY PLAN - NTS

3D - HOUSE TYPE B & B1 & B2 (NTS - for information)

Key Plan:

Rev:	Date:	Description:	By:
1	10/06/2022	Issued for Planning	MOLA

Drawing Status: **PLANNING**

Reply Address:  
2 Donnybrook Road, Telephone +353 1 218 3900  
Donnybrook, Dublin 4, Ireland  
www.molaarchitecture.com

Notes:  
Do not scale.  
Use figured dimensions only.  
This drawing is to be read in conjunction with all relevant specifications and drawings.  
All dimensions to be checked on site.  
In the event of any discrepancies between drawings the contractor is to inform the Architect immediately.

**MOLA**  
ARCHITECTS ■ PLANNERS ■ URBAN DESIGNERS ■

Client: Cairn Homes Properties Ltd.  
Project: Newcastle South

Drawing: House Type B & B1 & B2 - Terraced Units  
Date: 22/10/21 Scale: As indicated CJ NN  
Drawn By: Approved By: Int. Job No: 20023  
Project No: Originator: Zone: Level: Type: Discp: Class: Status: Rev: NCS21- MOLA-PX-ZZ-DR-A-XX 0404 P 1  
© COPYRIGHT This drawing or design may not be reproduced without permission